

CUSTOM STAINLESS VALVES

VALVES

GEN II EXTREME DUTY & SEVERE DUTY SERIES

- 3 Hard Tips and Hardened Grooves
- 3 No Need for Inserted Tips or Wear Caps

The procedure for ordering a custom valve is as simple as 1-2-3 !

1. Select the blank appropriate for your finished piece based first on stem diameter.
 2. Give us your final head diameter along with the seat and margin widths.
 3. Specify the length of the valve you want, along with groove type and location.
- * Part numbers with asterisks can be reduced 1.500" or 38 mm. All others .800" or 20.32 mm.



All Gen II custom stainless valve part numbers are priced to include all machining to render a finished valve provided that no more than .250" of material needs to be removed from the head diameter. If more than .250" of material is to be removed from the head diameter, then an additional machining charge P/N 04007 must be added to the price of the valve.

Part No.	Type	Maximum Head Diameter	Stem Diameter	Maximum Length	Underhead Angle / Radius	Margin	Seat Width	Top of Head	Material
XTREMEALLOY GEN II CUSTOM EXHAUST VALVES									
11225-8*	Exh.	1.625	.3415	5.600	15° x 1/2"	.080	.100	9° Dish	XtremeAlloy
11273-8*	Exh.	1.880	.3415	5.522	15° x 1/2"	.075	.085	9° Dish	XtremeAlloy
11223-8*	Exh.	2.060	.3415	6.700	15° x 1/2"	.080	.100	9° Dish	XtremeAlloy
11275-8*	Exh.	42.0 mm	8.0 mm / .3136	5.600	25° x 7/16"	.065	.100	18° Dish	XtremeAlloy
11257-8	Exh.	1.750	.3095	5.400	25° x 3/8"	.060	.100	20° Dish	XtremeAlloy
11265-8*	Exh.	39.0 mm	5.96 mm / .2345	4.800	25° x 11/32"	.080	.100	20° Dish	XtremeAlloy
SEVERE DUTY® GEN II CUSTOM VALVES									
11251-8	Exh.	1.940	.3715	5.650	12° x 3/8"	.085	.100	7° Dish	XH-428
11252-8*	Int.	2.300	.3720	5.600	Pro Flo: 12° x 7/16"	.065	.080	7° Dish	NK-844
11252H-8*	Int.	2.300	.3720 Hollow Stem	5.600	Pro Flo: 12° x 7/16"	.065	.080	7° Dish	NK-844
Pro Flo start is 1.600" from the top of the head.									
11245-8	Exh.	1.625	.3415	5.640	15° x 1/2"	.090	.100	9° Dish	XH-428
11255-8	Exh.	1.625	.3415	5.640	30° x 1/2"	.070	.100	25° Dish	XH-428
11253-8	Exh.	1.940	.3415	5.650	12° x 3/8"	.075	.080	7° Dish	XH-428
11221-8	Exh.	2.000	.3415	6.700	25° x 3/8"	.080	.100	20° Dish	XH-428
11219-8	Exh.	2.060	.3415	6.700	15° x 1/2"	.080	.100	9° Dish	XH-428
11256-8*	Int.	2.080	.3415	5.640	10° x 3/8"	.065	.080	5° Dish	NK-844
11254-8*	Int.	2.150	.3415	5.640	12° x 3/8"	.065	.080	7° Dish	NK-844
11254H-8*	Int.	2.150	.3415 Hollow Stem	5.640	12° x 3/8"	.065	.080	7° Dish	NK-844
11242-8*	Int.	2.150	.3415	5.655	Pro Flo: 12° x 3/8"	.065	.080	7° Dish	NK-844
Pro Flo start is 1.600" from the top of the head.									
11258-8*	Int.	2.425	.3415	5.700	12° x 3/8"	.065	.080	7° Dish	NK-844
11220-8*	Int.	2.425	.3415	6.800	10° x 3/8"	.050	.080	5° Dish	NK-844
11222-8*	Int.	2.425	.3415	6.700	20° x 3/8"	.050	.080	15° Dish	NK-844
11274-8*	Int.	56.5 mm	8.0 mm / .3133	5.600	Pro Flo: 12° x 3/8"	.060	.095	7° Dish	NK-844
11274H-8*	Int.	56.5 mm	8.0 mm / .3133 Hollow Stem	5.600	Pro Flo: 12° x 3/8"	.060	.095	7° Dish	NK-844
11227-8	Exh.	1.625	.3110	5.750	15° x 1/2"	.080	.100	9° Dish	XH-428
11263-8	Exh.	1.940	.3110	6.100	12° x 3/8"	.085	.100	7° Dish	XH-428
11224-8*	Int.	2.200	.3110	5.750	12° x 3/8"	.050	.080	7° Dish	NK-844
11224H-8*	Int.	2.200	.3110 Hollow Stem	5.750	12° x 3/8"	.050	.080	7° Dish	NK-844
11264-8*	Int.	2.400	.3110	6.300	10° x 3/8"	.065	.080	5° Dish	NK-844
11264H-8*	Int.	2.400	.3110 Hollow Stem	6.300	10° x 3/8"	.065	.080	5° Dish	NK-844
11229-8	Exh.	1.625	7.0 mm / .2740	5.600	15° x 1/2"	.080	.100	9° Dish	XH-428
11226-8*	Int.	2.200	7.0 mm / .2740	5.600	10° x 3/8"	.050	.080	5° Dish	NK-844

Note: New part numbers are *ITALICIZED*.

CUSTOM STAINLESS VALVES

GEN II RACE SERIES

- 3 Hard Tips and Hardened Grooves
- 3 No Need for Inserted Tips or Wear Caps

The procedure for ordering a custom valve is as simple as 1-2-3 !

1. Select the blank appropriate for your finished piece based first on stem diameter.
2. Give us your final head diameter along with the seat and margin widths.
3. Specify the length of the valve you want, along with groove type and location.

* Part numbers with asterisks can be reduced 1.500" or 38 mm. All others .800" or 20.32 mm.



All Gen II custom stainless valve part numbers are priced to include all machining to render a finished valve provided that no more than .250" of material needs to be removed from the head diameter. If more than .250" of material is to be removed from the head diameter, then an additional machining charge P/N 04007 must be added to the price of the valve.

Part No.	Type	Maximum Head Diameter	Stem Diameter	Maximum Length	Underhead Angle / Radius	Margin	Seat Width	Top of Head	Material
11215-8	Exh.	1.940	.3715	5.650	15° x 1/2"	.080	.100	9° Dish	XH-426
11214-8	Int.	2.425	.3715	5.650	12° x 3/8"	.050	.080	7° Dish	NK-842
11203-8	Exh.	1.625	.3415	5.500	15° x 1/2"	.090	.100	9° Dish	XH-426
11217-8	Exh.	1.650	.3415	5.640	Pro Flo: 15° x 1/2"	.090	.100	9° Dish	XH-426
					Pro Flo start is 1.600" from the top of the head.				
11243-8	Exh.	1.900	.3415	5.700	25° x 3/8"	.080	.100	20° Dish	XH-426
11201-8	Exh.	1.940	.3415	6.415	25° x 3/8"	.080	.100	20° Dish	XH-426
11241-8	Exh.	1.940	.3415	6.000	10° x 3/8"	.075	.100	5° Dish	XH-426
11218-8	Int.	2.125	.3415	5.540	12° x 3/8"	.065	.080	7° Dish	NK-842
11216-8	Int.	2.150	.3415	5.655	Pro Flo 12° x 3/8"	.065	.080	7° Dish	NK-842
					Pro Flo start is 1.600" from the top of the head.				
11200-8	Int.	2.375	.3415	5.700	10° x 3/8"	.050	.080	5° Dish	NK-842
11244-8	Int.	2.425	.3415	6.600	10° x 3/8"	.050	.080	5° Dish	NK-842
11211-4	Exh.	38.5 mm	8.0 mm / .3130"	4.500	15° x 3/8"	.060	.090	10° Dish	XH-426
11205-4	Exh.	40.0 mm	8.0 mm / .3130"	5.000	15° x 1/2"	.080	.100	9° Dish	XH-426
11210-4	Int.	48.5 mm	8.0 mm / .3130"	4.500	10° x 11/32"	.060	.080	5° Dish	NK-842
11204-4	Int.	52.0 mm	8.0 mm / .3130"	5.000	10° x 3/8"	.050	.080	5° Dish	NK-842
11269-8*	Exh.	42.0 mm	8.0 mm / .3136"	5.600	25° x 7/16"	.065	.100	18° Dish	XH-426
11270-8*	Int.	56.5 mm	8.0 mm / .3133"	5.600	Pro Flo: 12° x 3/8"	.060	.095	7° Dish	NK-842
11270H-8*	Int.	56.5 mm	8.0 mm / .3133" Hollow Stem	5.600	Pro Flo: 12° x 3/8"	.060	.095	7° Dish	NK-842
11271-8	Exh.	1.625	.3125	5.100	25° x 1/2"	.065	.100	20° Dish	XH-426
11272-8	Int.	2.125	.3125	5.100	Pro Flo: 12° x 3/8"	.050	.095	7° Dish	NK-842
11207-8	Exh.	1.625	.3110	5.700	15° x 1/2"	.080	.100	9° Dish	XH-426
11261-8	Exh.	1.625	.3110	6.400	18° x 1/2"	.080	.100	12° Dish	XH-426
11206-8	Int.	2.100	.3110	5.700	10° x 3/8"	.050	.080	5° Dish	NK-842
11262-8	Int.	2.100	.3110	6.400	12° x 3/8"	.050	.080	7° Dish	NK-842
11249-8	Exh.	2.100	.3100	5.400	22° x 1/4"	.050	.100	17° Dish	XH-426
11248-8*	Int.	2.300	.3100	5.900	24° x 3/4"	.060	.080	19° Dish	NK-842
11247-8	Exh.	37.0 mm	7.0 mm / .2740"	4.800	15° x 1/2"	.080	.100	9° Dish	XH-426
11267-8	Exh.	41.9mm / 1.650	7.0 mm / .2755"	4.700	30° x 1/2"	.060	.100	24° Dish	XH-426
11246-8	Int.	48.0 mm	7.0 mm / .2740"	4.800	10° x 3/8"	.050	.080	5° Dish	NK-842
11250-8*	Int.	48.0 mm	7.0 mm / .2750"	5.430	10° x 3/8"	.065	.080	4° Dish	NK-842
11268-8	Int.	50.8mm / 2.000	7.0 mm / .2755"	4.600	28° x 7/16"	.050	.100	22° Dish	NK-842
11259-8	Exh.	32.5 mm	6.54 mm / .2575"	113.5 mm	Pro Flo: 22° x 7/16"	.065	.080	Flat Face	XH-426
11260-8	Int.	36.0 mm	6.57 mm / .2587"	113.5 mm	Pro Flo: 22° x 11/32"	.065	.080	Flat Face	NK-842
11213-8	Exh.	33.0 mm	6.0 mm / .2362"	113.5 mm	25° x 11/32"	.065	.080	20° Dish	XH-426
11212-8	Int.	39.0 mm	6.0 mm / .2362"	113.5 mm	Pro Flo: 22° x 5/16"	.065	.080	17° Dish	NK-842
11266-8*	Int.	35.0 mm	5.98 mm / .2355"	4.800	12° x 5/16"	.065	.100	7° Dish	NK-842
11209-8	Exh.	32.0 mm	5.5 mm / .2165"	119.0 mm	25° x 11/32"	.065	.080	Flat Face	XH-426
11239-8	Exh.	33.5 mm	5.5 mm / .2165"	122.0 mm	Pro Flo: 22° x 5/16"	.065	.080	Flat Face	XH-426
11208-8	Int.	37.0 mm	5.5 mm / .2165"	119.0 mm	Pro Flo: 22° x 5/16"	.065	.080	Flat Face	NK-842

Note: New part numbers are *ITALICIZED*.

CUSTOM STAINLESS VALVES

PLEASE SEE GEN II CUSTOM VALVE SPECIFICATIONS PAGES 40 & 41
A WEAR CAP IS NOT NECESSARY WITH GEN II*

PLEASE FILL IN ALL DIMENSIONS AND ORDER INFO

USE BLANK P/N _____
CYLINDER HEAD _____

TIP LENGTH _____
STEM DIAM. _____

GROOVE TYPE
 CHEVROLET SQUARE GROOVE
 BEAD LOC® .055" RADIUS
 LS-1 .060" RADIUS
 HONDA .055" RADIUS
 OTHER : _____

OVERALL LENGTH _____

HEAD DIAM. _____

1ST BACK CUT
 WIDTH _____
 ANGLE _____

EDGE
 SHARP
 BREAK
 CORNER RADIUS _____

MARGIN _____

SEAT
 WIDTH _____
 ANGLE _____

* Provided that the overall length is within the minimum length parameter of the Gen II blank that is machined.

MANLEY PERFORMANCE PROD.
1960 SWARTHMORE AVE.
LAKEWOOD, NJ 08701
PHONE: 732-905-3366
FAX: 732-905-3010

ORDER INFO

ACCT. NO. _____
 NAME _____
 DATE _____
 P.O. # _____
 QTY. _____
 DUE DATE _____
 SHIP VIA _____

CUSTOM TITANIUM VALVES

Manley Performance can manufacture titanium valves for just about any application imaginable. Over the years, we've built titanium valves with 4.5mm stems for motorcycles as well as titanium valves with 3/8" stems for the Buick Indy car engines, and everything in between.

We inventory an extensive array of blanks in varying stem sizes with the correct stem coating positioning to properly fit the plethora of aftermarket cylinder heads available. This allows us to maintain reliable and very reasonable turnaround times (typically 7-10 working days) throughout the year.

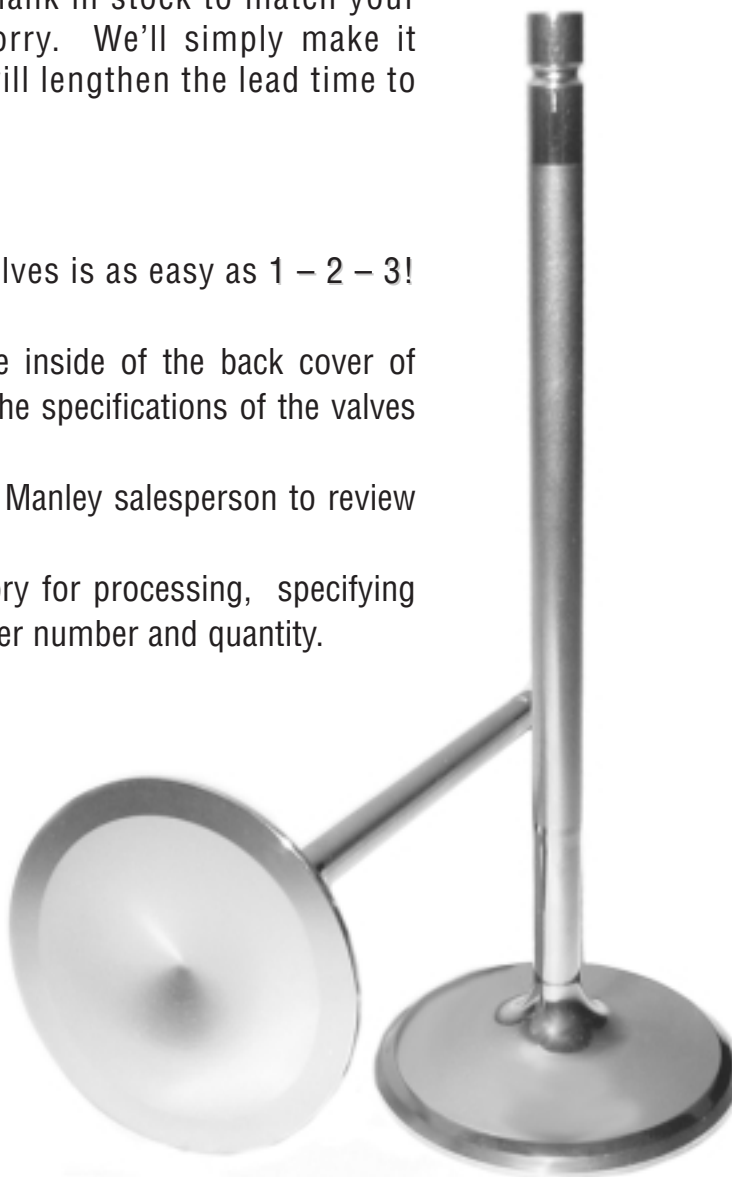
If by chance we don't have a blank in stock to match your particular application, then don't worry. We'll simply make it from one of our raw forgings. This will lengthen the lead time to 6 weeks.

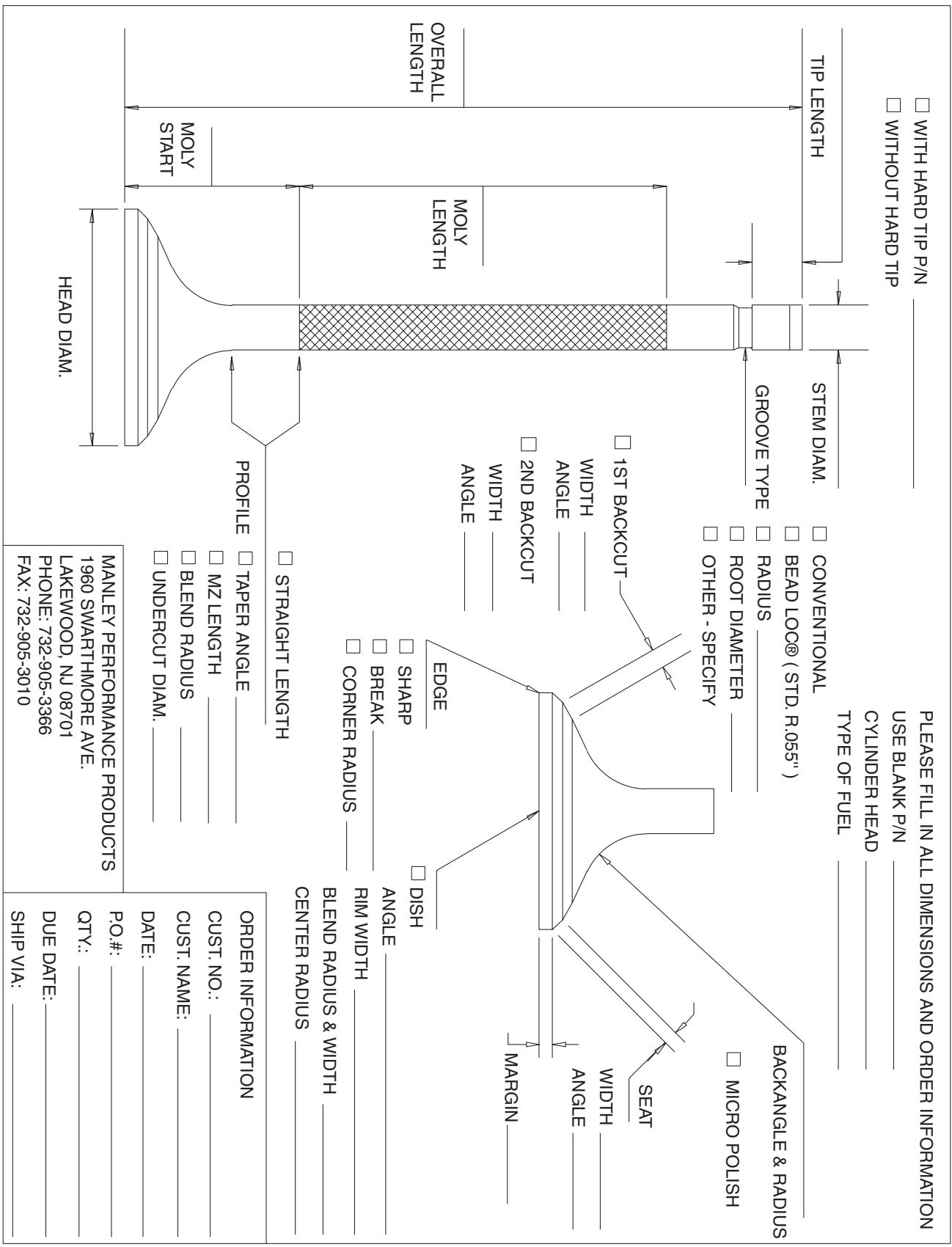
Ordering **Manley** custom titanium valves is as easy as 1 – 2 – 3!

1. Refer to the blank valve print on the inside of the back cover of this catalog. Make a copy and fill in the specifications of the valves you need.
2. Please contact your inside or outside Manley salesperson to review your order.
3. Fax your approved prints to the factory for processing, specifying your account number, a purchase order number and quantity.

For any stem size, any groove type, machined (dished) combustion faces or special head shapes and seat cuts, we're here to service your needs.

Our customer's prints are proprietary and confidential.





WITH HARD TIP P/N _____
 WITHOUT HARD TIP _____

PLEASE FILL IN ALL DIMENSIONS AND ORDER INFORMATION
 USE BLANK P/N _____
 CYLINDER HEAD _____
 TYPE OF FUEL _____

CONVENTIONAL
 BEAD LOC® (STD. R.055")
 RADIUS _____
 ROOT DIAMETER _____
 OTHER - SPECIFY _____

1ST BACKCUT
 WIDTH _____
 ANGLE _____
 2ND BACKCUT
 WIDTH _____
 ANGLE _____

SHARP
 BREAK _____
 CORNER RADIUS _____

BACKANGLE & RADIUS
 MICRO POLISH

SEAT
 WIDTH _____
 ANGLE _____
 MARGIN _____

DISH
 ANGLE _____
 RIM WIDTH _____
 BLEND RADIUS & WIDTH _____
 CENTER RADIUS _____

STRAIGHT LENGTH
 PROFILE
 TAPER ANGLE _____
 MZ LENGTH _____
 BLEND RADIUS _____
 UNDERCUT DIAM. _____

MANLEY PERFORMANCE PRODUCTS
 1960 SWARTHMORE AVE.
 LAKEWOOD, NJ 08701
 PHONE: 732-905-3366
 FAX: 732-905-3010

ORDER INFORMATION
 CUST. NO.: _____
 CUST. NAME: _____
 DATE: _____
 P.O.#: _____
 QTY.: _____
 DUE DATE: _____
 SHIP VIA: _____